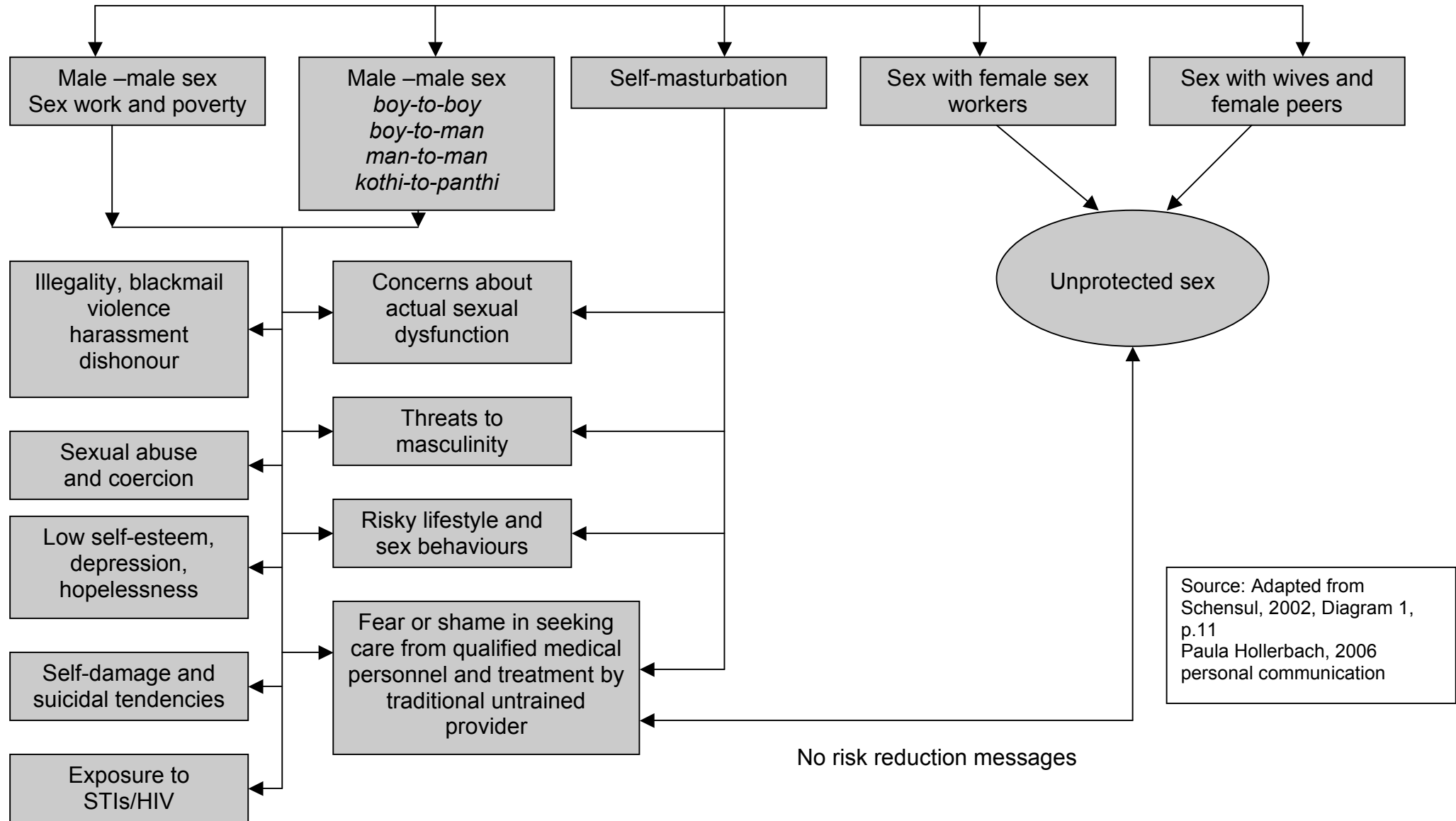




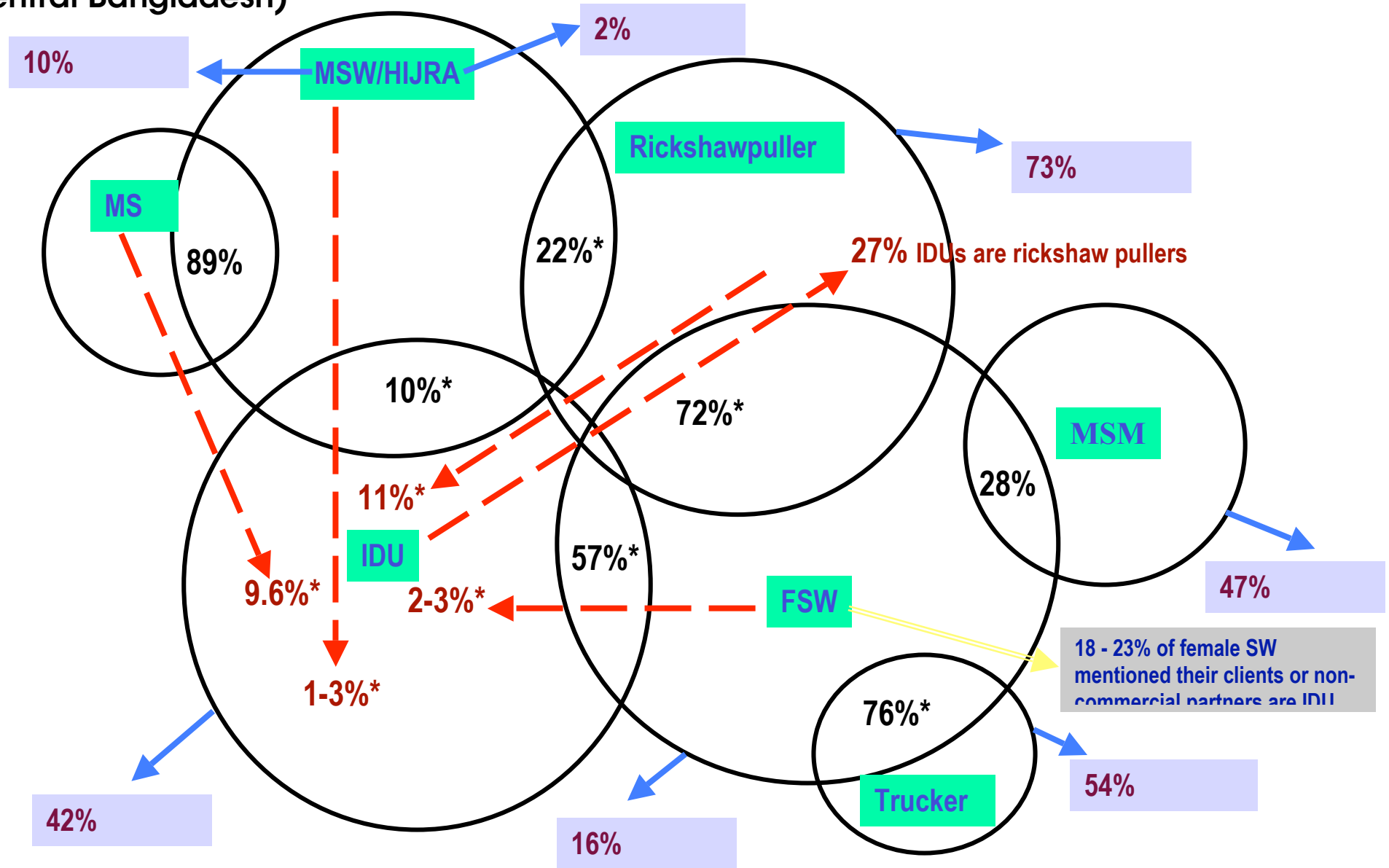
Interesting slides for MSM and HIV programming

Figure 1: Proposed linkages between male sexual relationships with males and females and associated risk behaviours and health outcomes



Source: Adapted from Schensul, 2002, Diagram 1, p.11
Paula Hollerbach, 2006 personal communication

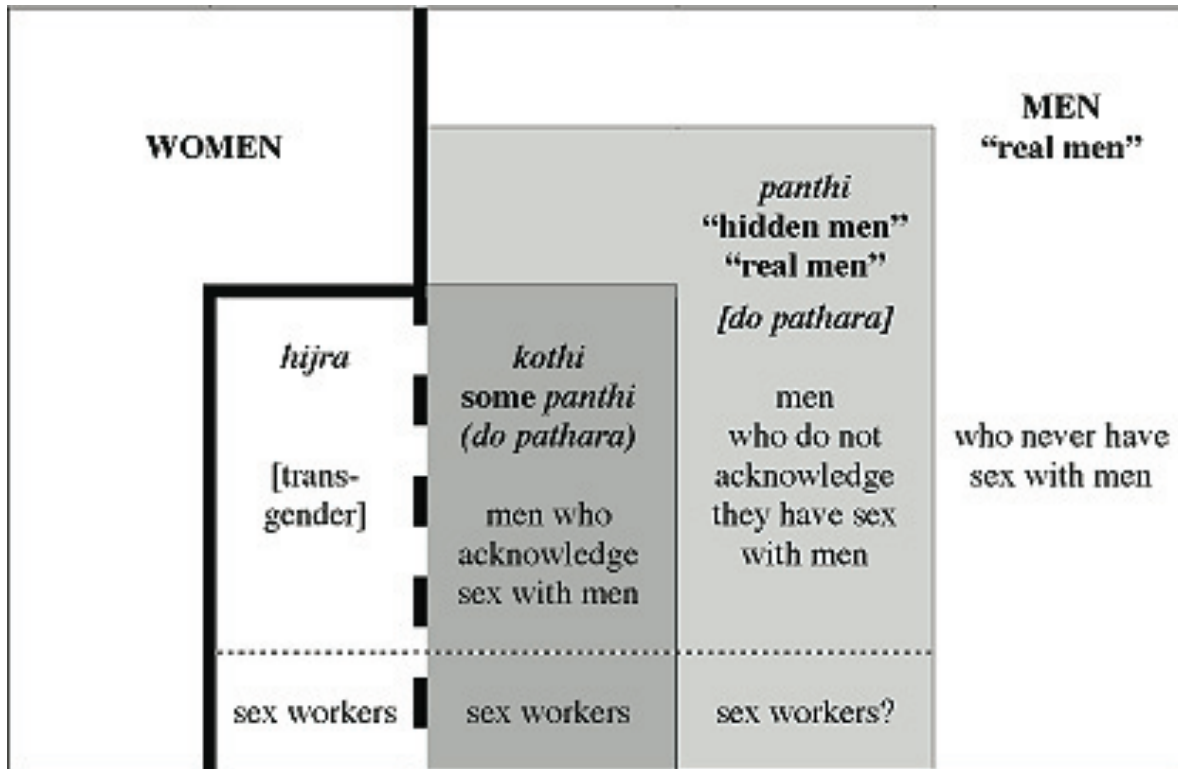
Figure 2: Potential spread of HIV from at-risk populations to the general population (from Central Bangladesh)



*Star marked figures refer to last year

Black font figures refer to commercial sex

Figure 3: Sexual identities and sexual behaviours



Martin Foreman

Figure 4: Mapping male - to - male sex

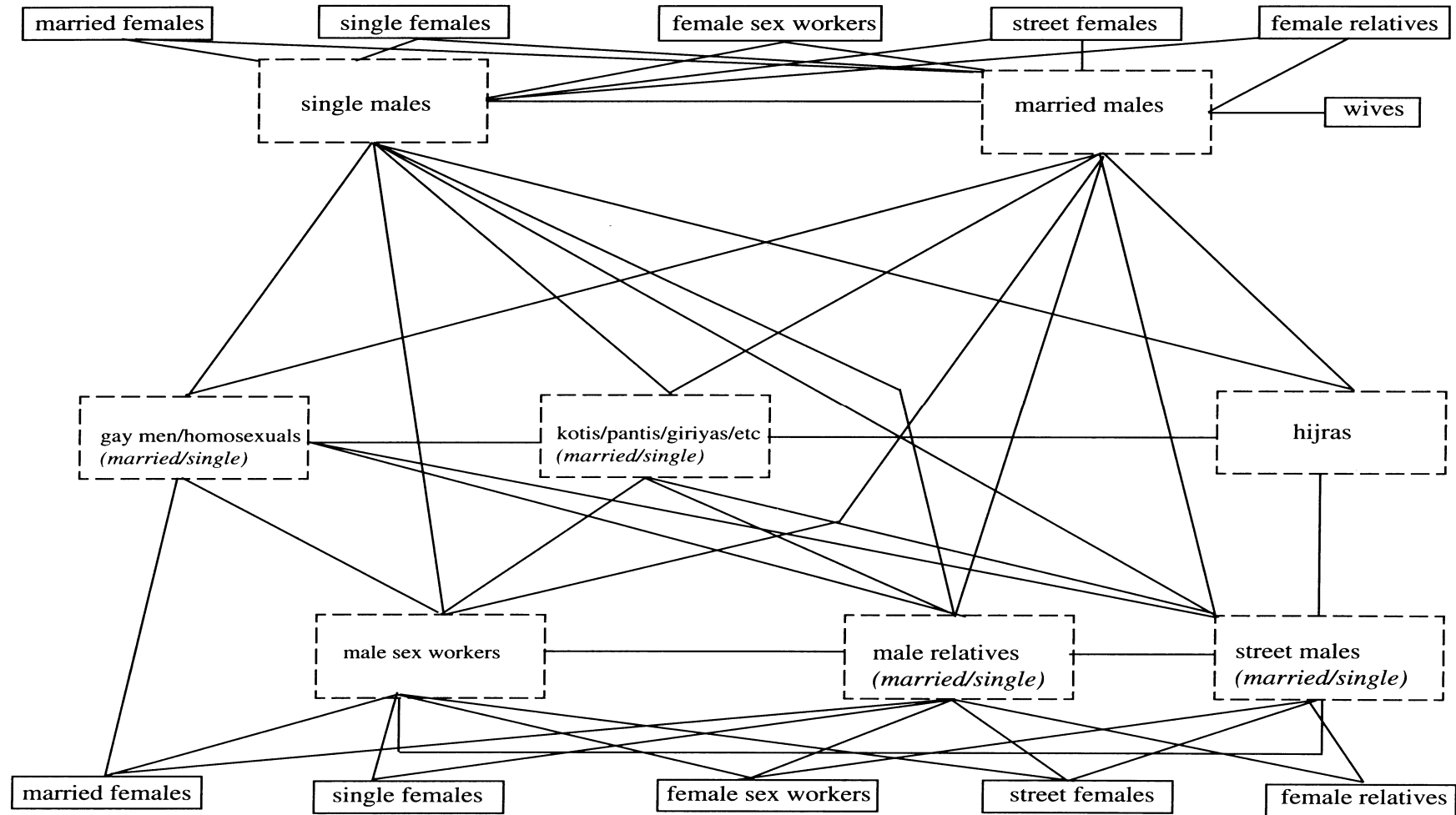


Figure 5: Reaching out to vulnerable and marginalised populations

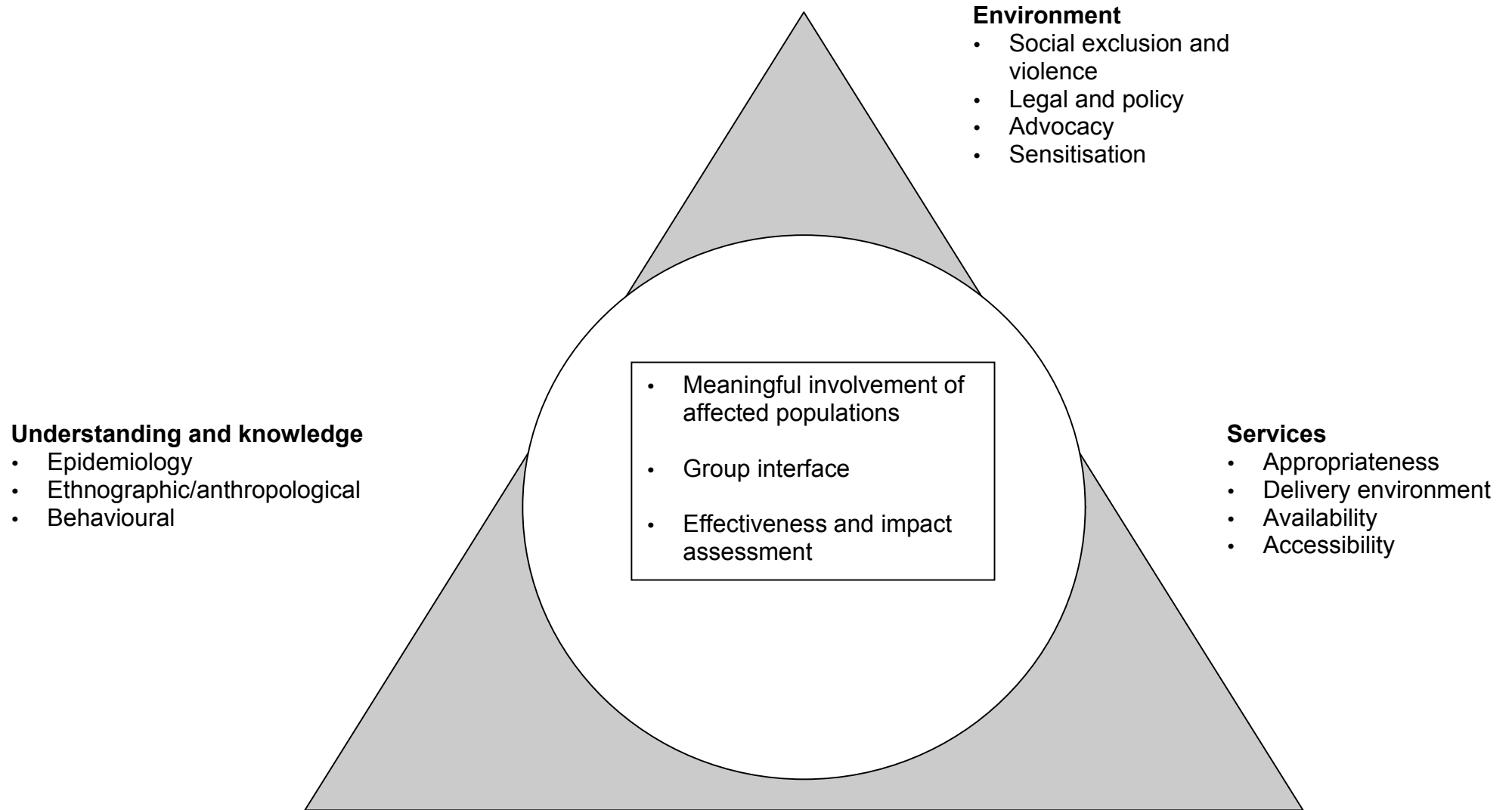


Figure 6: Social Exclusion

Gaps	Strategies
<p>Involvement of affected populations</p> <p>Appropriate legal and judicial framework and implementation</p> <p>Inter-ministerial synergy</p> <p>Acceptance of social diversities</p> <p>Mobilisation of more stakeholders, including service providers, donors, media, men in uniform, etc.</p>	<p>Process indicators showing involvement and economic and social empowerment</p> <p>Encourage public debate and conduct advocacy with stakeholders</p> <p>Advocacy with respective ministries</p> <p>Education policy review and outreach to larger community</p> <p>Advocacy and coalition building</p>

Figure 7: Understanding and knowledge

Gaps	Strategies
Epidemiological	Peer based research for mapping, size estimation and BCC development
Anthropological and ethnographic	Sensitisation of research organisations by peers
Behavioural	Interventions based on operational research
Risk perception Ownership and personalisation Treatment seeking	Adaption of good practice

Figure 8: Services

Gaps	Strategies
Peer-led services	<ul style="list-style-type: none"> • Collaboration among interventions • STI treatment through referral/linkages • BCC materials for all populations address anal sex • Safe spaces for socialising and community development • Foster sustainability through community ownership • Easy access to sexual health products • Capacity building and mentoring of peer led service providers • Adequate monitoring and evaluations
Needs based appropriate services	
Minimum essential standards for services	

Figure 9: Changing Behaviours

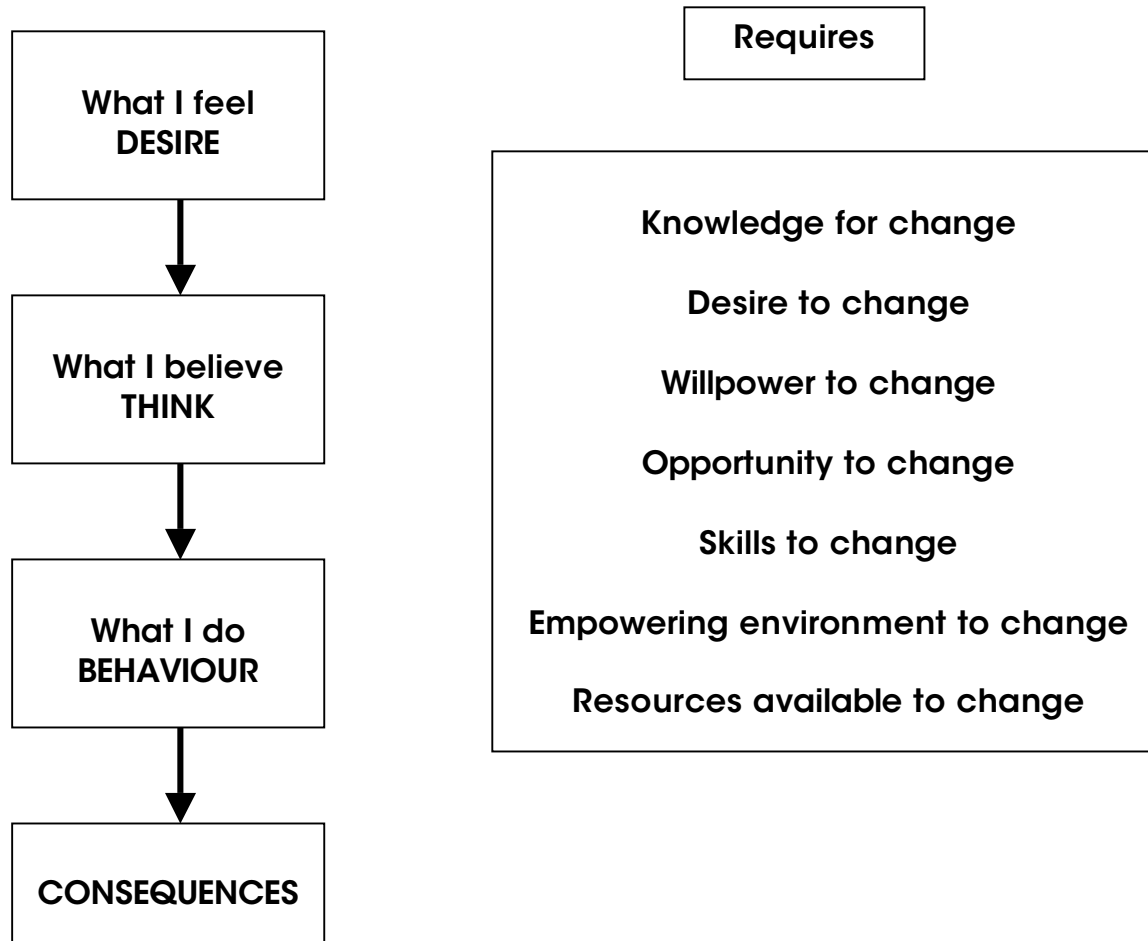


Figure 10: Comprehensive service package for MSM

