

NFI's Regional strategy

1. It is more effective because of the many similarities across the countries in the region that affect the risks and vulnerability of MSM and TG to HIV that enables the knowledge, skills and resources developed in one country to improve the outcome of activities in other countries in the region.
2. It is a more efficient because human, financial and other resources is shared across a number of countries, and the learning, skills and resources required in each country can be more easily accessed from these shared resources, without having to duplicate the effort of producing these from scratch.
3. It is more economic because of the need for fewer resources, as resources are shared across countries, rather than having to have them duplicated.

Locations and contact details

NFI Secretariat

1.3 Quay House
2 Admirals Way
London E14 9XG
UK
Tel: +44 (0) 20 7868 1510
Fax: +44 (0) 20 8741 9841
Email: info@nfi.net

NFI Regional Office

9 Gulzar Colony,
New Berry Lane
Lucknow 226001
India
Tel: +91 (0) 522 2205781/2
Fax: +91 (0) 522 2205783
Email: regional@nfi.net

Website: www.nfi.net

Our current country partners

1. Youth for Health Development Organisation, Afghanistan
2. Bandhu Social welfare Society, Bangladesh
3. Bhutan National ACP, Bhutan
4. Maan AIDS Foundation, India
5. Blue Diamond Society, Nepal
6. Naz Male Sexual Health Project, Pakistan
7. Companions on a Journey, Sri Lanka

Working in Partnership



Responding to the sexual health
needs of MSM

What is Naz Foundation International (NFI)?

Naz Foundation International has been providing technical and institutional assistance to MSM networks, groups, collectives and organisations in South Asia since 1996 to develop their own HIV prevention, care and support services through community-based organising.

What we offer

Experience

15 years of direct experience working with MSM and sexual health across South Asia, which includes assisting country MSM networks to develop their own community-based services, and range of multilingual training and capacity-building tool-kits to support this.

Access to technical resources

Includes a range of capacity-building and management tool kits which have been tried and tested over the past fifteen years to support institutionalised programmatic and fiscal management of MSM community-based organisations.

A strong advocacy, policy and ongoing support strategy

Our model of MSM and HIV service development includes a strong component of upstream advocacy and policy development, to help create a positive political, social, legal and policy environment for the work to be sufficiently well resourced and enabled.

Services

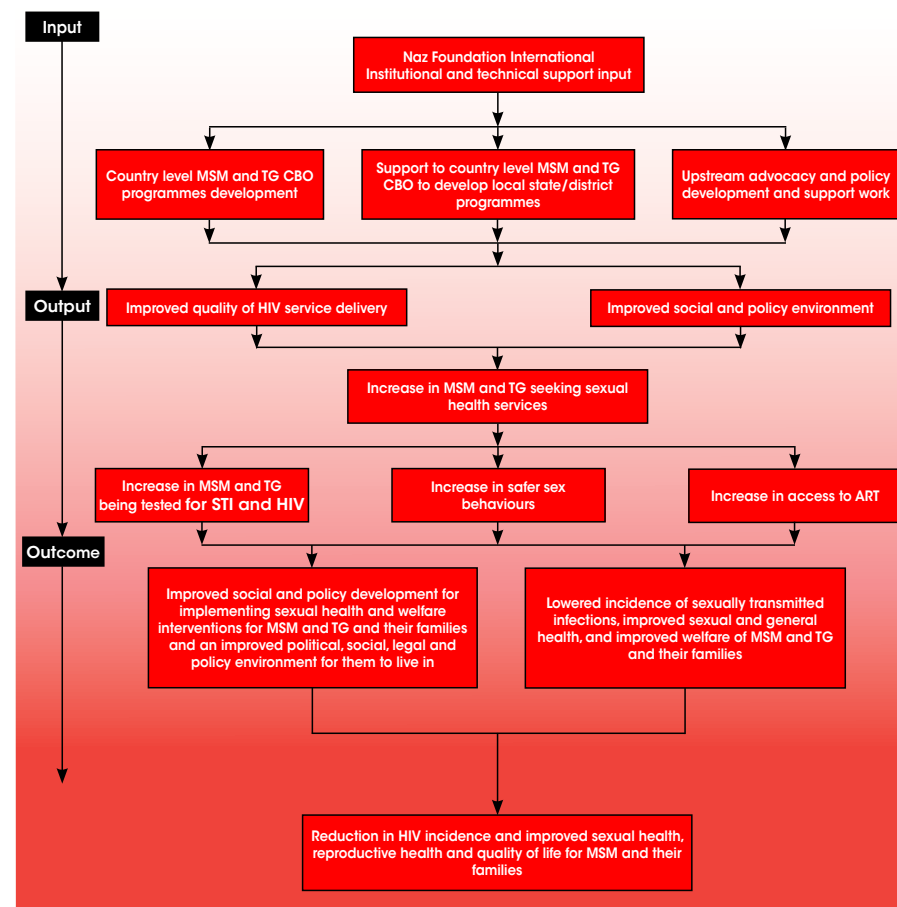
Technical assistance programme

Our technical assistance programme provides a comprehensive strategy for institutional support for our country partners and support for the scaling of coverage of MSM and sexual health services through the development of local MSM community based responses.

A dedicated and experienced technical team is available to support this strategy, offering specialised skills, knowledge, and utilising the specific tools and resources that NFI has developed over the years in different localities across South Asia. Such resources include specific training manuals and management tools (programmatic, financial, and monitoring).

Along with this, the Technical Support Team can provide on-going technical assistance, training and support.

The NFI Process model for scaling up coverage of MSM HIV services



Knowledge Management

Our South Asia Regional Office, based in India, hosts a Knowledge and Resource Centre. This unit provides a range of knowledge resources on MSM, male sexualities and sexual health issues and concerns.

Resource Development

Working with the Knowledge and Resource Centre, and local MSM HIV projects technical assistance and support is providing for the development of a range of IEC and BCC resources in different languages that ensure locality and replicability without increasing costs.