

Males

- * discharge from penis (green, yellow, pus-like)

Females

- * irregular bleeding (abnormal menses)
- * lower abdominal/pelvic pain
- * abnormal vaginal discharge (white, yellow, green, frothy, bubbly, curd-like, pus-like, unpleasant smell)
- * swelling and/or itching of the vagina; swelling of the cervix
- * painful or difficult intercourse

If you or your partner have any of these symptoms, see a qualified doctor immediately.



syphilis - on a lip

For further information call

Sexually Transmitted Diseases

Many people with sexually transmitted diseases do not have any symptoms. People can be infected with more than one sex disease

DO YOU HAVE THESE SYMPTOMS?

Males

- * discharge from penis (green, yellow, pus-like)

Females

- * irregular bleeding (abnormal menses)
- * lower abdominal/pelvic pain
- * abnormal vaginal discharge (white, yellow, green, frothy, bubbly, curd-like, pus-like, unpleasant smell)
- * swelling and/or itching of the vagina; swelling of the cervix
- * painful or difficult intercourse

If you or your partner have any of these symptoms, see a qualified doctor immediately.



syphilis - on a lip

For further information call

Sexually Transmitted Diseases

Many people with sexually transmitted diseases do not have any symptoms. People can be infected with more than one sex disease

DO YOU HAVE THESE SYMPTOMS?

Males

- * discharge from penis (green, yellow, pus-like)

Females

- * irregular bleeding (abnormal menses)
- * lower abdominal/pelvic pain
- * abnormal vaginal discharge (white, yellow, green, frothy, bubbly, curd-like, pus-like, unpleasant smell)
- * swelling and/or itching of the vagina; swelling of the cervix
- * painful or difficult intercourse

If you or your partner have any of these symptoms, see a qualified doctor immediately.



syphilis - on a lip

For further information call

Sexually Transmitted Diseases

Many people with sexually transmitted diseases do not have any symptoms. People can be infected with more than one sex disease

DO YOU HAVE THESE SYMPTOMS?

Males

- * discharge from penis (green, yellow, pus-like)

Females

- * irregular bleeding (abnormal menses)
- * lower abdominal/pelvic pain
- * abnormal vaginal discharge (white, yellow, green, frothy, bubbly, curd-like, pus-like, unpleasant smell)
- * swelling and/or itching of the vagina; swelling of the cervix
- * painful or difficult intercourse

If you or your partner have any of these symptoms, see a qualified doctor immediately.



syphilis - on a lip

For further information call

Sexually Transmitted Diseases

Many people with sexually transmitted diseases do not have any symptoms. People can be infected with more than one sex disease

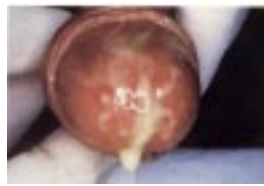
DO YOU HAVE THESE SYMPTOMS?

General (occurs in both males and females)

- * painful urination, difficulty urinating, frequency of urination increases
- * swollen and painful glands/lymph nodes in the groin
- * blisters and open sores (ulcers) on the genitals, painful and/or non-painful
- * small lumps under the skin
- * warts on the genital area
- * non-itchy rash on limbs
- * itching or tingling sensation in the genital area
- * flu-like symptoms (headache, malaise, nausea, vomiting)
- * fever, chills
- * sores in the mouth
- * occasional diarrhoea

Anal symptoms

- * itching/burning around the anus (the opening) and/or rectum (the end of the alimentary canal)
- * pus or mucous discharge in stools
- * mild to severe pains on bowel movements
- * warts around anus
- * bleeding



Gonorrhoea



Syphilis - first stage



secondary syphilis rash around anus



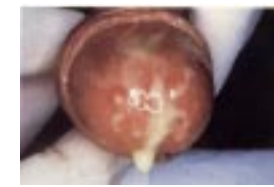
herpes genitalis

General (occurs in both males and females)

- * painful urination, difficulty urinating, frequency of urination increases
- * swollen and painful glands/lymph nodes in the groin
- * blisters and open sores (ulcers) on the genitals, painful and/or non-painful
- * small lumps under the skin
- * warts on the genital area
- * non-itchy rash on limbs
- * itching or tingling sensation in the genital area
- * flu-like symptoms (headache, malaise, nausea, vomiting)
- * fever, chills
- * sores in the mouth
- * occasional diarrhoea

Anal symptoms

- * itching/burning around the anus (the opening) and/or rectum (the end of the alimentary canal)
- * pus or mucous discharge in stools
- * mild to severe pains on bowel movements
- * warts around anus
- * bleeding



Gonorrhoea



Syphilis - first stage



secondary syphilis rash around anus



herpes genitalis

General (occurs in both males and females)

- * painful urination, difficulty urinating, frequency of urination increases
- * swollen and painful glands/lymph nodes in the groin
- * blisters and open sores (ulcers) on the genitals, painful and/or non-painful
- * small lumps under the skin
- * warts on the genital area
- * non-itchy rash on limbs
- * itching or tingling sensation in the genital area
- * flu-like symptoms (headache, malaise, nausea, vomiting)
- * fever, chills
- * sores in the mouth
- * occasional diarrhoea

Anal symptoms

- * itching/burning around the anus (the opening) and/or rectum (the end of the alimentary canal)
- * pus or mucous discharge in stools
- * mild to severe pains on bowel movements
- * warts around anus
- * bleeding



Gonorrhoea



Syphilis - first stage



secondary syphilis rash around anus



herpes genitalis

General (occurs in both males and females)

- * painful urination, difficulty urinating, frequency of urination increases
- * swollen and painful glands/lymph nodes in the groin
- * blisters and open sores (ulcers) on the genitals, painful and/or non-painful
- * small lumps under the skin
- * warts on the genital area
- * non-itchy rash on limbs
- * itching or tingling sensation in the genital area
- * flu-like symptoms (headache, malaise, nausea, vomiting)
- * fever, chills
- * sores in the mouth
- * occasional diarrhoea

Anal symptoms

- * itching/burning around the anus (the opening) and/or rectum (the end of the alimentary canal)
- * pus or mucous discharge in stools
- * mild to severe pains on bowel movements
- * warts around anus
- * bleeding



Gonorrhoea



Syphilis - first stage



secondary syphilis rash around anus



herpes genitalis